

KARIBAN  
PREMIUM

PK731

## Ladies' jeans

- Comfortable, fitted jeans.
- Old Brass tone finish for stylish haberdashery.

99% cotton denim/1% elastane. 10.5 oz. Zip fastening with one metal button, metal rivets in the same Old Brass colour. Two front pockets, including one with a ticket pocket. 2 patch back pockets. Contrasting burgundy seams. Waistband with loops and contrasting inner band at back. Straight fit. The garment is washed with a specific treatment that results in colour variations between garments. Wash separately. This garment may rub off on contact with light surfaces. No brand label, only size tag for easy decoration access.



34 FR - 36 FR - 38 FR - 40 FR - 42 FR - 44 FR - 46 FR - 48 FR



360 g/m<sup>2</sup>

**No Label**



### More information

#### Logistic



1



20



TR - Turkey

#### Customs code



62046231



Denim

#### Washing instructions



### Also available in version



PK730

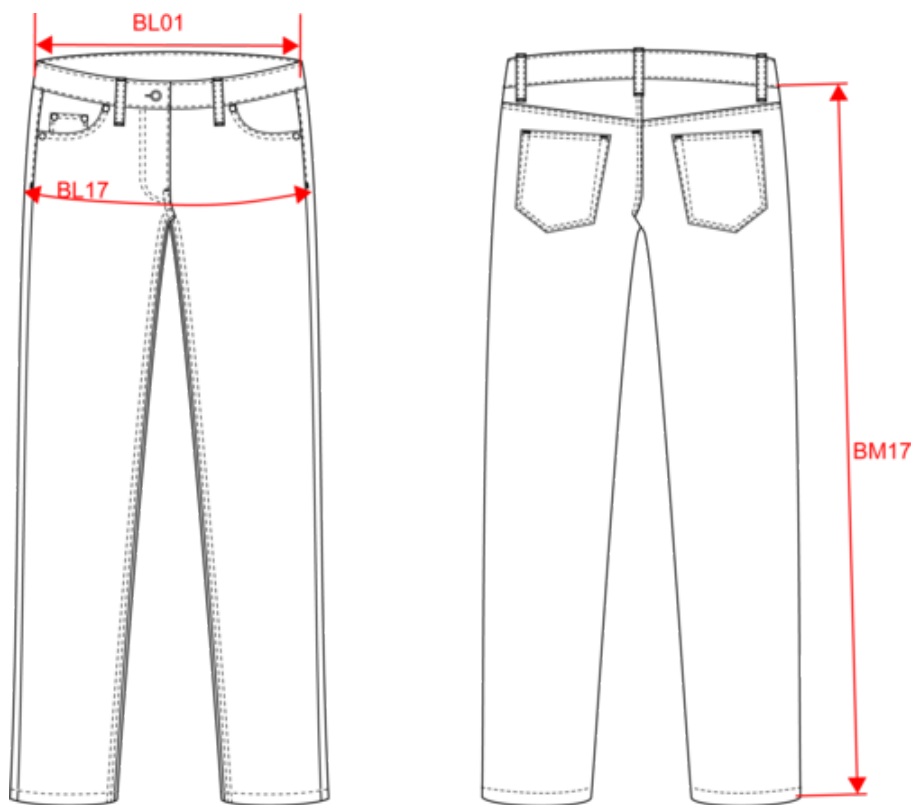


KARIBAN  
PREMIUM

PK731

Ladies' jeans

Dimensions (cm)



Measurements in cm	34	36	38	40	42	44	46	48
BL01 - 1/2 waist width (buttoned up and front band over back band)	35.00	37.00	39.00	41.00	43.00	45.00	47.00	49.00
BL17 - 1/2 hip width (measured parallel to waistband)	42.00	44.00	46.00	48.00	50.00	52.00	54.00	56.00
BM17 - Side length (waistband excluded)	99.50	100.00	100.50	101.00	101.50	102.00	102.50	103.00

# KARIBAN PREMIUM



PK731

## Ladies' jeans

### Colours information

#### Denim

RVB : 59,63,79  
Pantone C : 432C  
Pantone TCX : 19-4025TCX

Logistic  1  20

Sizes	Width (cm)	Height (cm)	Length (cm)	Net weight (kg)	Gross weight (kg)	Pieces/Box	Pieces/Bundle
34 FR	40.00	30.00	60.00	12.50000	13.50000	20	1
36 FR	40.00	30.00	60.00	12.50000	13.50000	20	1
38 FR	40.00	30.00	60.00	12.50000	13.50000	20	1
40 FR	40.00	30.00	60.00	12.50000	13.50000	20	1
42 FR	40.00	30.00	60.00	12.50000	13.50000	20	1
44 FR	40.00	30.00	60.00	12.50000	13.50000	20	1
46 FR	40.00	30.00	60.00	12.50000	13.50000	20	1
48 FR	40.00	30.00	60.00	12.50000	13.50000	20	1